



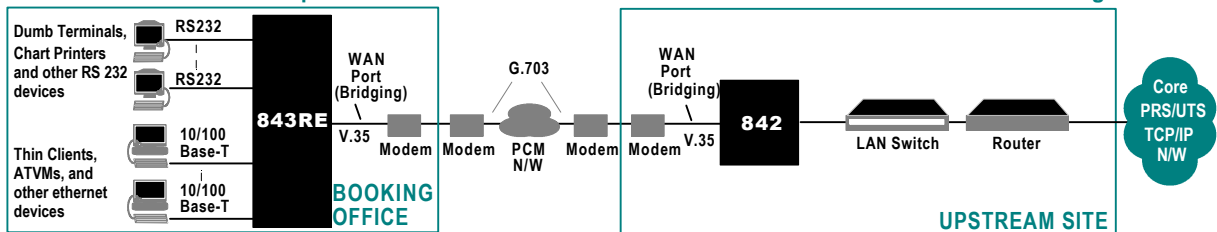
# CYGNUS 843RE

## Bridging Terminal Server (BriTS)

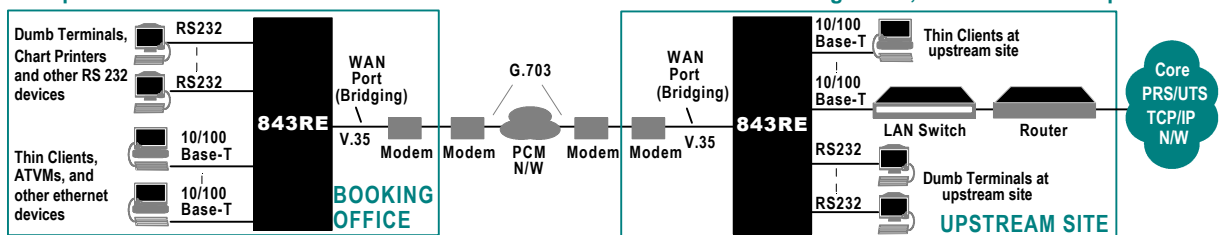
### FEATURES

- A CYGNUS 843RE unit at a remote site, along with a counterpart CYGNUS 842 at an upstream site, allows remote async RS232 devices to set up TELNET/TCP/RLOGIN sessions to central host computers without needing a separate Terminal Server at the upstream site. Only the CYGNUS 843RE unit requires a network IP address to be assigned.
- The counterpart unit at the upstream site could also be CYGNUS 843RE instead of CYGNUS 842. In this set up, RS232 and ethernet terminals at both the remote and the upstream sites can access host computers, with each CYGNUS 843RE unit having its own IP address.
- CYGNUS 843RE can also work as an ordinary standalone Terminal Server. Its advantage over basic Terminal Servers is that in addition to RS 232 ports it also has a built-in 4-port 10/100 Base-TX ethernet switch. This allows Thin Clients, ATVMs, and other ethernet devices to access central host computers via the same set up.
- CYGNUS 843RE can be ordered with 4, 8 or 16 RS232 ports. A 4-port built-in ethernet switch is standard in all models of CYGNUS 843RE.
- Interconnection between the remote CYGNUS 843RE and its upstream counterpart is via a leased line (traditional or MLLN), at speeds from 64 kbps to 2 Mbps. External leased line modems are required.
- Ordering option of 1500 VAC isolation on RS232 ports using RX, TX, and Ground. Isolation reduces chances of port failure even in sites with low quality power supply, poor earthing, or high levels of electrical noise.
- TELNET/SNMP/PING support allows the unit to be configured and monitored from a central site.
- Simpler, more cost-effective, and easier to operate solutions when compared with alternatives using Routers, Terminal Servers and Switches

**CYGNUS 843RE/CYGNUS 842 pair used to connect dumb terminals and thin clients at a remote booking office**



**CYGNUS 843RE pair used to connect dumb terminals and thin clients at a remote booking office, as well as at an upstream site**



### SPECIFICATIONS

#### Terminal Ports (TPs)

No. of ports 4, 8 or 16 (ordering time option)  
 Compliance Asynchronous RS232 with Tx/D, Rx/D, Ground; Option for 1500 VAC isolation on each port; Speed: 1.2 - 230.4 kbps  
 Connector RJ 45 socket

#### Ethernet Ports (EPs)

No. of ports 4  
 Compliance 10/100 Base-TX, IEEE 802.3u, Auto negotiation  
 Connector RJ 45 socket

#### Console Port

Character format 9600 bps, 8 bits, no parity  
 Compliance Asynchronous RS232  
 Connector RJ 45 socket

#### Modem Port

Compliance Synchronous V.35; Speed 64 kbps-2 Mbps  
 Connector 25-pin D type Male

#### Management and Control of the Unit

Methods By supervisory commands and/or via SNMP V1/V2  
 Supervisory access Menu based, password protected supervisory function accessed via Console Port or via Telnet over the network  
 TP Commands Enable/disable ports, select port parameters (speed, parity, flow control, etc.), view statistics  
 EP Commands Enable/disable ports; Configure MAC based access lists

#### Protocol Support

TCP, IP, PPP, UDP, ICMP, IGMP, ARP, DHCP, BOOTP, TELNET

#### Additional Facilities on RS232 TPs

- Terminal Server functionality in "Bridged Mode" is fully compatible with Railways' PRS/UTS: It supports "Implicit" connections between terminals and hosts, multiple simultaneous sessions per port; separately programmable Answer Back codes per session, "Local" prompt on the terminal ports.
- Facility to send messages to Terminal Ports

#### Indicators

For each TP: Transmit, Receive; For each EP: Link, Activity; Others: Power, Default, Test Mode, Link

#### General

Power 230 VAC nominal  
 Oper. environment 0-50 deg C, 5-95% RH (non condensing)

#### Ordering Code: CYGNUS 843RE /A/B

"A": Specify "4TP" for 4 RS 232 ports, "8TP" for 8 RS 232 ports and "16 TP" for 16 RS 232 ports

"B": Specify 1500V if 1.5kV AC isolation protection is required on RS232 Terminal Ports and Supervisory Port

E.g.: - CYGNUS 843RE/16TP/4EP/1500V

Note: Specifications are subject to change without notice  
 Ref.: 221122



## CYGNUS MICROSYSTEMS (P) LIMITED

93, IDA Phase II, Cherlapally, Hyderabad 500 051, India  
 Tel: +91 (40) 2726 1327

URL: www.cygnusmicro.com e-mail: mktg@cygnusmicro.com

ISO 9001:2015  
 Registered