



CYGNUS 1105

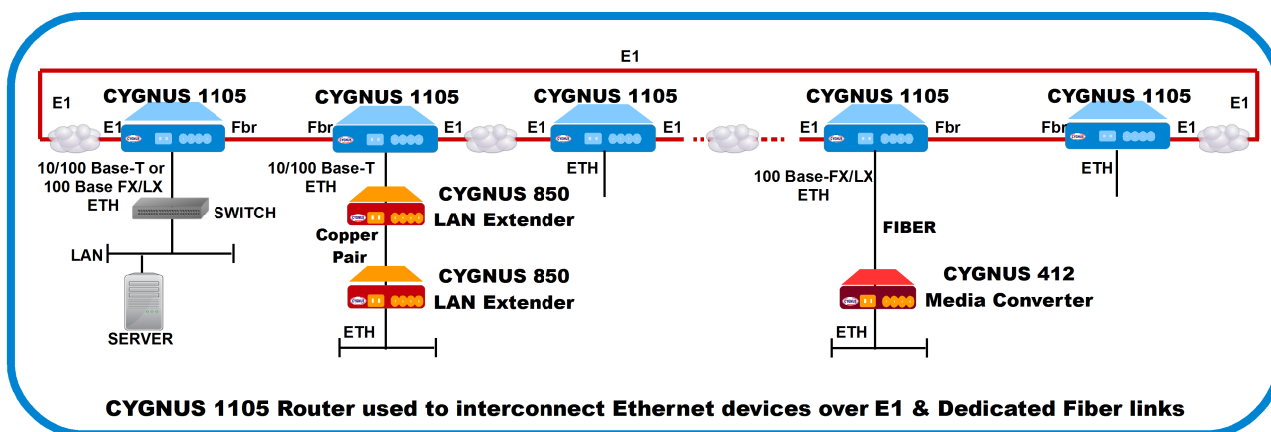
2-WAN Port Router

FEATURES

- Cost-effective TCP/IP router for branch office networking
- Up to 2 leased line WAN ports with options for V.35 or E1 or dedicated Fiber interface
- Up to 3 independent LAN interfaces can support built-in 10/100 Base-Tx copper or 100 Base FX fiber interfaces. Each LAN port can have different mask for connection to different ethernet networks
- Routing protocol support includes OSPF, Static Routing and RIP
- Supervisory control via TELNET or through a dedicated console port
- User friendly menu based configuration and monitoring

CYGNUS 1105 is ideal for providing point-to-point networking between two offices, or for multipoint networking. Its powerful 32-bit CPU-based design and its compliance with industry standard protocols also allows the CYGNUS 1105 to be used as an access device in large multi-location networks.

The standard WAN port interface on the product can be E1 or V.35 or Dedicated fiber. The versatility of the product is boosted by having integrated telecom interfaces on its WAN ports. These telecom interface allow the CYGNUS 1105 to be directly connected to digital communication links terminating in 2 Mbps G.703 (E1) interfaces. These telecom options make an external converter unnecessary for connecting the unit to a digital communication link. As an option fiber interface also can be used. If ordered with E1, automatic fall back to E1 is possible in case if the fiber fails.



SPECIFICATIONS

Ethernet Ports (LAN) (Copper and Fiber) - Selectable one at a time for all LAN interfaces

No. of copper ports	Up-to three independent, 10/100 BaseTx compatible
Connector	RJ45
No. of Fiber Ports	Up-to three independent,, 100Base FX compatible
Connector	SFP with option of Bi-Di SC or Duplex LC

WAN Ports

No. of ports	Up to two synchronous WAN ports
Speed	2 Mbps
Interface options	E1(balanced 120 ohm), or V.35 or Dedicated Fiber
Connector	RJ45 (E1 interface), DB-25 Male (V.35 interface) Fiber type and Connector for dedicated fiber interface: SC for Single Mode Bi-di 20 km range , LC for Single mode Duplex, 20 km range

Console Port

Character format	9600 bps, 8 bit, no parity
Connector	RJ45

Protocol Support

TCP/IP protocols	TCP, IP, UDP, ICMP, ARP, DHCP,
Routing protocols	Static Routing, RIP V1, RIP V2, OSPF
WAN protocols	PPP - Sync
Other protocols	Telnet, FTP, SNMP

Management and control

Menu based, self guided, password protected supervisory function accessed via Supervisory Terminal or via Telnet over the network

General

Power	24-48 VDC single or dual hot standby as ordering time option
Operating environment	Humidity: 5-95% RH (non condensing) Temp: 0-+55 deg C
Dimensions	19 inch rack mountable

Ordering Information: CYGNUS 1105 T/U/V/W/X/Y/Z

T: Specify Power Supply: "DC" for 24-48VDC, "2DC" for 24-48 VDC in Standby mode

U: Specify WAN1 interface: V.35 or E1 and/or Dedicated Fiber

V: Specify WAN2 interface: V.35 or E1 and/or Dedicated Fiber

W: No. of independent LAN: 1, 2 or 3

X: LAN Interface: T or F or FT (for 10/100Base T, 100Base FX/LX, or both)

Y: Fiber connector for LAN. Specify one of the following:

- "SC" for SC connector on Bi-Directional fiber
- "LC" for LC connector on duplex fiber

Z: Fiber type and Connector for WAN : SC for Single Mode Bi-di with SC connector, LC for Single mode, Duplex

Note: Specifications are subject to change without notice

Ref.: 220806



CYGNUS MICROSYSTEMS (P) LIMITED

93, IDA Phase II, Cherlapally, Hyderabad 500051, India

Tel: +91 (40) 2726 1327

URL: www.cygnusmicro.com e-mail: mktg@cygnusmicro.com

ISO 9001 : 2015
Registered