



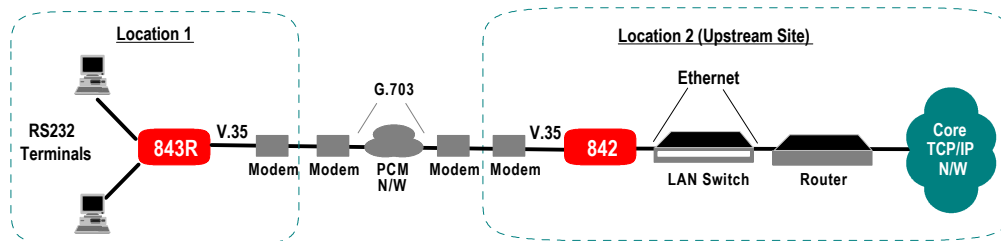
CYGNUS 842

Remote Ethernet Bridge

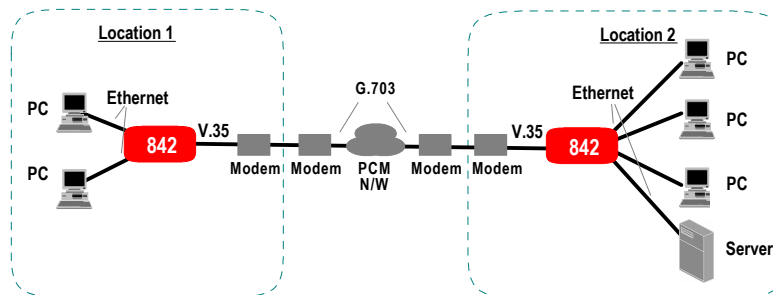
FEATURES

- Facilitates bridging with a similar unit, or Bridged Terminal Servers like CYGNUS 843 over a leased line which offers a V.35 interface via a modem
- Upto 2 Mbps speed on V.35 port
- Built-in ethernet switch with four 10/100 Base-TX compatible ports
- Front panel indicators for displaying unit status

APPLICATIONS



CYGNUS 842 Bridges with CYGNUS 843 Bridging Terminal Server to facilitate location of RS232 terminals at remote offices



Built-in ethernet switching and bridging features of CYGNUS 842 enable ethernet compatible devices at two locations to be easily networked

SPECIFICATIONS

V.35 DATA PORT

Conformance: ITU-T V.35.
 Format: Synchronous
 Speed: Up to 2048 kbps
 Connector: 25-pin D-type (Male); Supplied with cable to connect to a standard V.35 DCE

ETHERNET INTERFACES

No. of ports: Four
 interfaces: 10/100 Base-TX
 Connectors: RJ-45 socket
 Functionality: Transparent, auto learning ethernet bridge.

CLOCKING

External clock (supplied by modem connected to V.35 interface)

FRONT PANEL INDICATORS

Power, DCD, TM, LINK, V.35, LAN port Transmit and Receive (for switch as a whole), speed (10 or 100 Mbps) and Full duplex/Collision status.

GENERAL

Power: 230 VAC nominal
 Operating Environment: 0-50 deg C, 5-95% RH (non condensing)

ORDERING INFORMATION

Order Code: CYGNUS 842
 Note: Specifications are subject to change without notice

Ref: 130914



CYGNUS MICROSYSTEMS (P) LIMITED

93, Phase II, IDA Cherlapally, Hyderabad 500 051, India
 Tel: +91 (40) 2726 1326 Fax: +91 (40) 2726 1167
 URL: www.cygnusmicro.com e-mail: mktg@cygnusmicro.com



ISO 9001:2008
 Registered