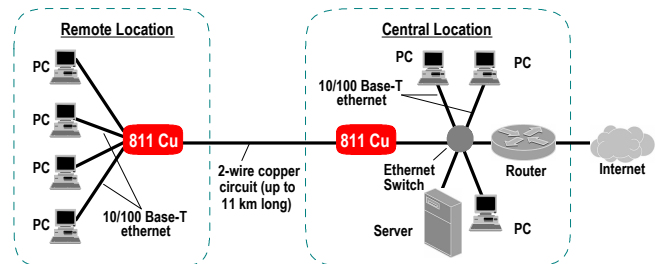




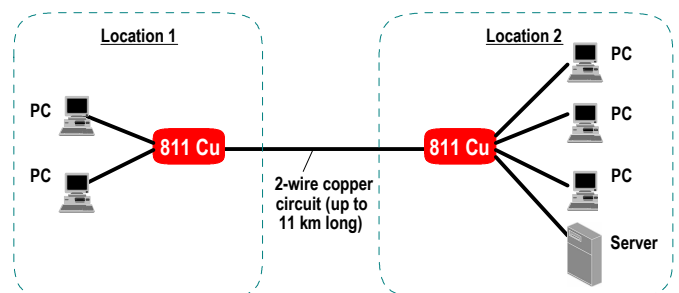
CYGNUS 811 Cu Copper Ethernet Extender

FEATURES

- Extends ethernet LANs up to 11 km on standard 0.5 mm diameter telephone wiring
- Operates in pairs across 2-wire unloaded copper circuit
- Offers trade off between speed and driving range - driving range varies from 5.5 km at 2304 kbps to 11 km at 192 kbps.
- Speed can be selected between 192 kbps and 2304 kbps, in seven steps, to get rate-range benefit
- Avoids need for additional equipment at small sites -
 - offers optional built-in 2 port or 4-port ethernet switch
 - offers built-in transparent bridging functionality
- Can be connected to a wide variety of ethernet devices - all ethernet interfaces are autosensing 10/100 Base-TX compatible
- Facility for testing line quality using PRBS pattern generation and checking
- Easy to configure and monitor:
 - simple DIP switch based configuration
 - front panel indicators for displaying unit status



Extending central site LAN to a nearby remote location using CYGNUS 811 Cu



Built in ethernet switching, bridging and LAN extension features of CYGNUS 811 Cu enable devices at two locations to be easily networked

CYGNUS 811 Cu Copper Ethernet Extender is the product of choice for extending ethernet LANs up to 11 km on existing or new telephone wiring. It provides flexibility by allowing speed to be traded off for increased range. By combining ethernet switching, bridging, and extension, the CYGNUS 811 Cu enables cost effective solutions which can be installed and operated quickly and conveniently.

SPECIFICATIONS

LINE INTERFACE

Speed: 192 kbps to 2304 kbps in seven steps
 Range: Up to 5.5 km at 2304 kbps; upto 11 km at 192 kbps
 Coding & Modulation: G.SHDSL
 Line Impedance: 135 ohms
 Connector: RJ-11 socket
 Protection: Current limiting devices in series, GD tube in shunt

ETHERNET INTERFACES

No. of interfaces: Standard model: 1
 Ordering option: 2 port or 4 port inbuilt ethernet switch
 Compatibility: IEEE 802.3 10/100 Base-T half or full-duplex autosensing interface
 Connector: RJ-45 socket for UTP cables
 Functionality: Transparent, auto learning ethernet bridge

CONFIGURATION

Method: Through DIP switches

DIAGNOSTIC FACILITIES

Test pattern generation and checking; remote loopback

INDICATORS

Link, Line Error, LT, Transmit, Receive, Test, Pattern Error, Power
 For each ethernet interface: Speed, Link up, Traffic, Collision, Full duplex

GENERAL

Size: 150 mm (w) x 167 mm (d) x 38 mm (h)
 Power input: 6 V external AC adaptor

ORDERING INFORMATION

Order code: CYGNUS 811 Cu - X

X: Specifies the number of ethernet ports in the inbuilt ethernet switch. For standard 1 port model, leave blank; for 2 port switch specify "-2"; for 4 port switch specify "-4".

Note: Specifications are subject to change without notice
 Ref.: 100916



CYGNUS MICROSYSTEMS (P) LIMITED

93, IDA Phase II, Cherlapally, Hyderabad 500 051, India

Tel: +91 (40) 2726 1326 Fax: +91 (40) 2726 1167

URL: www.cygnusmicro.com e-mail: mktg@cygnusmicro.com



ISO 9001:2008
 Registered