



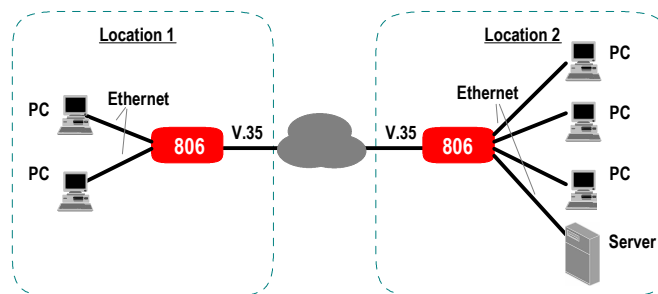
# CYGNUS 806

Ethernet - V.35 Bridge

## FEATURES

- Facilitates ethernet bridging with a similar unit, over a data link which offers a V.35 interface
- Front panel indicators for displaying unit status
- Powered via external AC adapter
- Choice of built-in ethernet switch with:
  - four 10/100 Base-T compatible ports
  - two 10/100 Base-T compatible ports
  - one 10/100 Base-T and one 100 Base-FX ethernet port

## APPLICATION



Built-in ethernet switching and bridging features of CYGNUS 806 enable ethernet compatible devices at two locations to be easily networked

## SPECIFICATIONS

### V.35 DATA PORT

Conformance: ITU-T V.35.  
Format: Synchronous  
Speed: 2048 kbps or Nx64 kbps  
Connector: 25-pin D-type (Male); Supplied with cable to connect to a standard V.35 DCE

### ETHERNET INTERFACES

No. and type of: 4 10/100 Base-T (standard)  
interfaces: 1 10/100 Base-T and 1 100 Base-FX (ordering time option)  
2 10/100 Base-T (ordering time option)

Connectors: For 10/100 Base-T: RJ-45 socket  
For 100 Base-FX: SC connector  
Functionality: Transparent, auto learning ethernet bridge.

### CLOCKING

External clock (supplied by modem connected to V.35 interface)

### FRONT PANEL INDICATORS

Power, DCD, DSR, LAN port Transmit and Receive (for switch as a whole), individual port activity, speed (10 or 100 Mbps) and Full duplex/Collision status.

### GENERAL

Size: 155 mm (w) x 56 mm (h) x 102 mm (d)  
Power: 6V AC adapter supplied

### ORDERING INFORMATION

Order Code: CYGNUS 806

*Note: Specifications are subject to change without notice  
Ref: 080314*



## CYGNUS MICROSYSTEMS (P) LIMITED

93, Phase II, IDA Cherlapally, Hyderabad 500 051, India

Tel: +91 (40) 2726 1326 Fax: +91 (40) 2726 1167 URL: [www.cygnusmicro.com](http://www.cygnusmicro.com) e-mail: [mktg@cygnusmicro.com](mailto:mktg@cygnusmicro.com)



ISO 9001:2000  
Registered