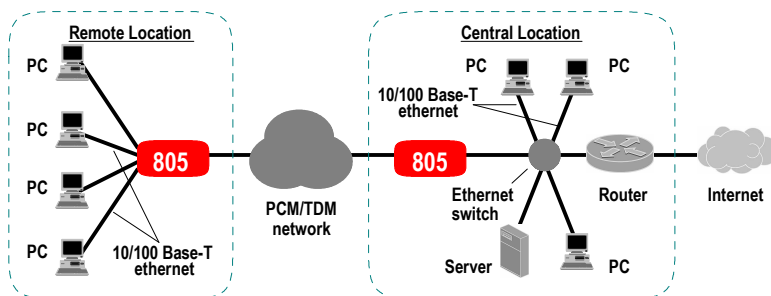




### FEATURES

- Operates in pairs to allow 10/100 Base-T ethernet networks to be bridged over E1 links
- Option for built-in 2 or 4-port ethernet switch
- Console port for configuring and monitoring the unit with menu driven supervisory software for configuration, monitoring and statistics reporting
- Ordering option for LCD-keypad for configuring and monitoring
- Ordering option for 230 VAC or -48 VDC power supply input
- 120 ohm balanced and 75 ohm unbalanced (ordering option) E1 interface provided
- Built-in pattern generator and checker for qualitative and quantitative error performance monitoring of the E1 interface
- Loopback facilities for fault isolation
- Ordering option for audible alarm to indicate E1 link failure
- Front panel indicators for displaying unit status



CYGNUS 805 used to bridge two LANs across a PCM/TDM network

### SPECIFICATIONS

#### E1 PORT

Type:	4-wire interface
Conformance:	ITU-T Rec. G.703, G.704
Speed:	2048 kbps
Termination:	Balanced 120 ohms on RJ-45 connector <i>Ordering option:</i> unbalanced 75 ohms on BNC connector
Encoding:	HDB3
Jitter:	Complies with ITU-T G.823
Frame formats:	- Unframed - Framed: Selectable from PCM 31 - FAS only; PCM 31C - FAS and CRC-4; PCM 30 - FAS and CAS; PCM 30C - FAS, CAS and CRC-4
Protection:	GD tube in shunt, current limiting device in series

#### ETHERNET SWITCH

No. of ports:	Two; ordering time option for four
Interface compatibility:	10/100 Base-T
Connector:	RJ-45 socket

#### SUPERVISORY PORT

Interface compatibility:	ITU-T V.24/RS232
Format:	Asynchronous; 8 data bits, 1 stop bit, no parity
Speed:	Selectable from 4.8, 9.6, 19.2 or 38.4 kbps
Connector:	9 pin 'D' female connector

#### LCD-KEYPAD (ORDERING TIME OPTION)

LCD:	16 characters x 2 lines, with backlight
Keypad:	Four keys (Next, Back, Select and Exit)
Function:	Parameter selection for framed/unframed mode

#### CLOCKING OPTIONS

Recovered clock:	Clock is derived from E1 port receive signal.
Internal clock:	Clock derived from E1 port receive is used to receive E1 data and transmit it to the ethernet ports. An internally generated clock is used to transmit data on E1 and receive data from ethernet ports.

#### DIAGNOSTICS

E1 port loop back; Pattern generation and checking for E1 port

#### INDICATORS

Front panel: Power, Test/Default, E1 link, E1 Error, Pattern error, Clocking mode, LAN Transmit, LAN Receive, Alarm, Buzzer disable  
Back panel: For each ethernet port:

#### AUDIBLE ALARM (ORDERING TIME OPTION)

Option of resettable audible alarm which sounds on failure of E1 link.

#### GENERAL

Size: 220 mm (w) x 212 mm (d) x 54 mm (h)  
Power: Option for 230 VAC or -48 VDC supply input

#### ORDERING INFORMATION

Order Code: CYGNUS 805 V/W/X/Y/Z  
V: Specify "E1-75" if both 75 and 120 ohm E1 interfaces are required; leave blank if only 120 ohm interface is required  
W: Specify "ETH4" if 4 port ethernet bridge is required; leave blank for 2 ports  
X: Specify "LCD" if LCD-keypad is required  
Y: Specify "AC" for 230 VAC supply input, "DC" for -48 VDC supply input, "AC&DC" for both supplies  
Z: Specify "BZR" if provision for audible alarm is required; else leave blank

*Note: Specifications are subject to change without notice  
Ref.: 100916*



## CYGNUS MICROSYSTEMS (P) LIMITED

93, IDA Phase II, Cherlapally, Hyderabad 500 051, India

Tel: +91 (40) 2726 1326 Fax: +91 (40) 2726 1167

URL: www.cygnusmicro.com e-mail: mktg@cygnusmicro.com



ISO 9001:2008  
Registered