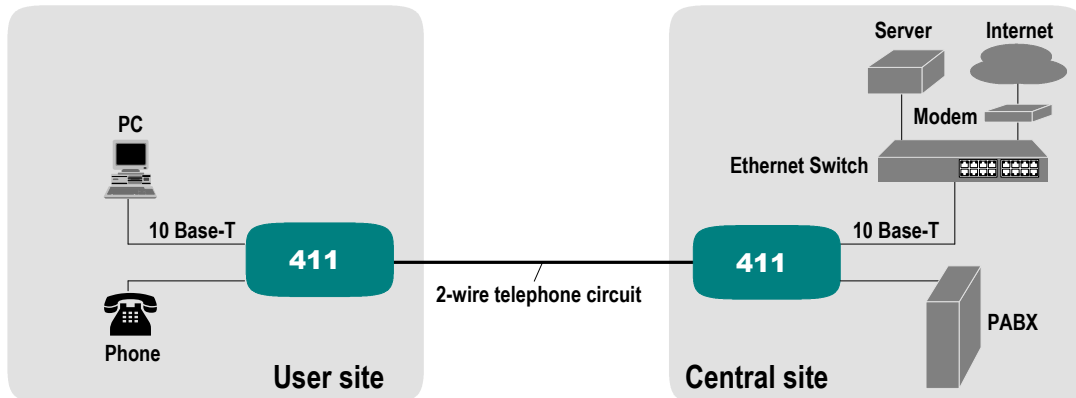




CYGNUS 411

LAN Extender with Simultaneous Telephone Connection



A cost-effective way to provide on-campus users with internet access and access to central servers. Ideal for hotels, offices and campuses. Figure shows CYGNUS 411 being used to extend a port of a central LAN switch over existing telephone wiring, without disturbing the telephone connection.

FEATURES

- Extends ethernet LANs at line speeds of up to 8 Mbps on existing telephone wiring, without disrupting phone connection
- Offers trade-off between speed and driving range - driving range on standard 0.5 mm diameter telephone wire varies from 800 metres at 8 Mbps to 2.3 kilometres at 1 Mbps
- Phone connection continues to work even if units are powered off
- Ethernet interface complies with 10 Base T; voice interface can be connected one side to a telephone instrument, and on the other side to a PABX
- Easy to configure and monitor

SPECIFICATIONS

LINE INTERFACE

Speed: 1 Mbps to 8 Mbps (Tx+ Rx, dynamically allocated)
Range: 800 m at 8 Mbps; 1.3 km at 4 Mbps; 1.8 km at 2 Mbps; 2.3 km at 1 Mbps on 0.5 mm diameter unloaded twisted copper pair
Connector: RJ-11 socket

ETHERNET INTERFACE

No. of interfaces: 1
Compatibility: IEEE 802.3 10 Base-T
Connector: RJ-45 socket

VOICE INTERFACE

No. of interfaces: 1
Connector: RJ-11 socket

CONFIGURATION

Line speed and Master/Slave selection through DIP switches

INDICATORS

Power, Link, MST, LAN Link, Collision

GENERAL

Size: 97 mm (w) x 153 mm (d) x 31 mm (h)
Power input: 5 V external AC adapter

ORDERING INFORMATION

Order code: CYGNUS 411

*Note: Specifications are subject to change without notice
Ref.: 100909*



CYGNUS MICROSYSTEMS (P) LIMITED

93, IDA Phase II, Cherlapally, Hyderabad 500 051, India

Tel: +91 (40) 2726 1326 Fax: +91 (40) 2726 1167

URL: www.cygnusmicro.com e-mail: mktg@cygnusmicro.com



ISO 9001:2008
Registered