



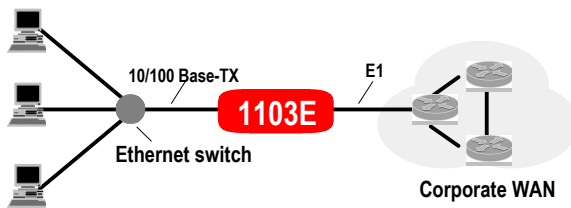
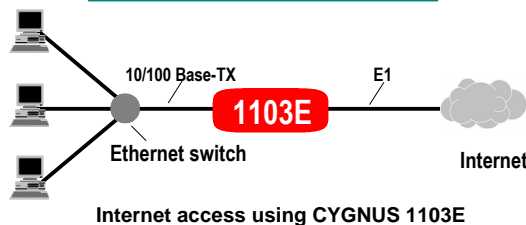
CYGNUS 1103E

Router with built-in E1 WAN interface

FEATURES

- Cost-effective TCP/IP router for branch office networking and internet access
- E1 interface on WAN port - avoids the need for external interface converters
- 10/100 Base-TX ethernet port
- Routing protocol support includes OSPF, Static Routing and RIP; Spanning Tree based bridging also supported
- Supervisory control via TELNET or through a dedicated console port; SNMP support
- Front panel LED indicators; loopback switch for easy WAN link troubleshooting
- User friendly menu based configuration and monitoring

TYPICAL APPLICATIONS



The CYGNUS 1103E is ideal for providing internet access to a small office or cyber cafe, for point-to-point networking between two offices, or for multipoint networking. Its powerful 32-bit CPU-based design and its compliance with industry standard protocols also allows the CYGNUS 1103E to be used as an access device in large multi-location networks. The CYGNUS 1103E can also be used as an auto learning bridge.

The WAN interface on CYGNUS 1103E is ITU-T G.703 (E1) compatible. Control and management is via menu driven supervisory software which can be accessed from a dedicated console port provided for this purpose, or via TELNET over the network. The firmware can be upgraded using FTP or via the serial console port. SNMP support in the product aids centralised management.

The CYGNUS 1103E comes to you from Cygnus, which has been offering reliable, cost-effective datacom and networking products in India for several years. Since Cygnus designs and manufactures its products in-house it is in a position to offer comprehensive technical support for its products.

SPECIFICATIONS

LAN Port

No. of ports One, 10/100BaseTX compatible
Connector RJ 45 socket

WAN Port

No. of ports One
Interface E1, conforming to ITU-T G.703 and G.704
Speed N x 64 kbps or 2 Mbps, framed or unframed
Connector RJ 45 socket

Console Port

Character format 9600 bps, 8 bit, no parity
Connector DB-9, Female

Protocol Support

TCP/IP protocols TCP, IP, PPP, UDP, ICMP, IGMP, ARP, DHCP, BOOTP
Routing protocols Static Routing, RIP V1, RIP V2, OSPF
WAN protocols PPP - Sync or Async, LCP, IPCP, BCP, HDLC, SLIP, CSLIP
Security & others PAP, CHAP, RADIUS, NAT/NAPT, Telnet, FTP, SNMP
Bridging Auto learning, Spanning Tree algorithm based bridge with capacity to learn upto 10,000 MAC addresses

Management, control, monitoring and diagnostics

Menu based supervisory function accessed via Supervisory Terminal or via Telnet over the network; SNMP support; LED indicators, WAN port loopback diagnostic switch; Extensive diagnostics facilities and statistics reporting through supervisor

General

Power Ordering time option of:
- AC input (85-263 VAC, 47-63 Hz)
- DC input (-36 to -76 VDC)
- Both AC and DC inputs as per above specifications
Operating environment 0-50 deg C, 5-95% RH (non condensing)
Dimensions 262 mm (w) x 156 mm (d) x 47 mm (h)

Ordering information

Part code: CYGNUS 1103E/Y. Specify "Y" as "AC" for AC power supply input, "DC" for DC supply, "AC+DC" for both AC and DC power inputs.

*Note: Specifications are subject to change without notice
Ref.: 080213*



CYGNUS MICROSYSTEMS (P) LIMITED

93, IDA Phase II, Cherlapally, Hyderabad 500 051, India

Tel: +91 (40) 2726 1326 Fax: +91 (40) 2726 1167

URL: www.cygnusmicro.com e-mail: mktg@cygnusmicro.com



ISO 9001:2000
Registered